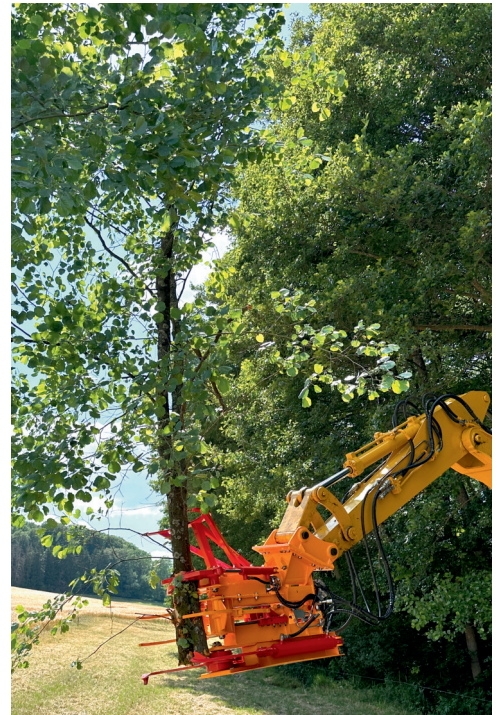


# Schnitt-Griffy® HS 800/SE/SG

**New**



The **Schnitt-Griffy HS® 800 SE** is a very convenient tree cutter that is available with many options. Despite its high cutting performance, the Schnitt-Griffy® is very lightweight, due to the innovative design and new, high-quality materials. The open construction ensures easy accessibility for mounting of components.

A hydraulic valve controls the closing of the grippers so the limb is held securely before it is cut.

The **Schnitt-Griffy®** is suitable for excavators weighting 8 - 15 tons.

The **Schnitt-Griffy® HS 800 SE** has twice the swivel capacity compared to the HS 850, for additional safety.

A swivel angle of 2 x 55° allows precise lopping of branches, which can then be stacked alongside the excavator.

The **Schnitt-Griffy®** is also available without a swivel unit.

The new modular construction allows retrofitting of options at any time.

#### **Additional equipment for sorting and loading tasks**

The cutting function of the knives can be stopped by fitting a cut-off valve, and the grippers can be operated on their own.

This gripper mode is very beneficial for sorting and loading tasks!

The function is also available for retrofitting.

The **Schnitt-Griffy® HS 800** model can be equipped with a collecting gripper.

The collecting gripper can be used to collect smaller branches and shrubs.

They no longer have to be deposited separately.

This advantage saves work time and cuts operating costs.

The collecting gripper has a collecting capacity diameter of up to 250 mm.

The collecting gripper for models **HS 800 and HS 800 SE** can easily be retrofitted at any time.

#### **Applications:**

On the road, by the side of rivers, in the forest, for land-scraping and landscape conservation, for Common Osiers (willow trees), on railways, for overland power lines, and much more.



**collection gripper SG 800**  
for the models HS 800  
and HS 800 SE

Hans Habbig Maschinenbau  
Ziegelhütte 1 · D-36381 Schlüchtern  
Tel.: +49 6661 71347 · Fax: +49 6661 5922  
info@hans-habbig.com · www.hans-habbig.com

**HH** **HANS HABBIG**  
**M** **MASCHINENBAU**

# Schnitt-Griffy® HS 800/SE/SG



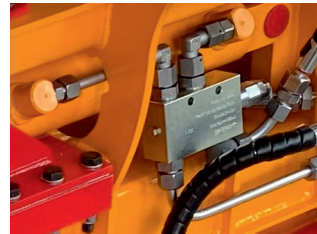
Schnitt-Griffy HS 800 SE with SG 800 in action



Schnitt-Griffy HS 800 SE



Schnitt-Griffy HS 800 SE with SG 800 in grippermode



### Additional equipment overcenter valve with overload safety device

With installation of the overcenter valve, it is no longer important whether the spool valve of the excavator hold a tight seal. The grab remains closed until the open command is given. The overcenter valve is also available for retrofitting for all models.

## TECHNICAL SPECIFICATIONS

<b>Length × Width × Height with SG:</b>	1650 × 800 × 1150 mm
<b>Weight without attachment:</b>	HS 800 SE: approx. 525 kg (approx. 455 kg without SE) SG 800 : approx. 95 kg (fully equipped : 620 kg)
<b>Opening width:</b>	approx. 660 mm
<b>Cutting performance:</b>	Alder approx. 320 mm, Oak approx. 230 mm
<b>Pivoting angle:</b>	approx. 2 x 55°
<b>Torque:</b>	at 0°: 19 kNm, at 55°: 11,5 kNm
<b>Connection main working circuit:</b>	1 x double-action, pressure 300 bar, oil flow 100 to 110 l/min (Primary and secondary safety switch necessary!)
<b>Connection swivel unit:</b>	1 x double action, pressure 200 bar, oil flow 20 to 40 l/min (Primary and secondary safety switch necessary!)
<b>Recommended excavator size:</b>	from 8 – 15 to
<b>Minimum lifting capacity (mass):</b>	950 kg

Technical modifications reserved



**HANS HABBIG  
MASCHINENBAU**

Ziegelhütte 1  
D-36381 Schlüchtern  
Telefon: 06661-71347  
Fax: 06661-5922  
info@hans-habbig.com  
www.hans-habbig.com

Distribution by:

